



# GAT MONTHLY MEMBERSHIP PROGRESS REPORT

Results as of: 12/31/2022

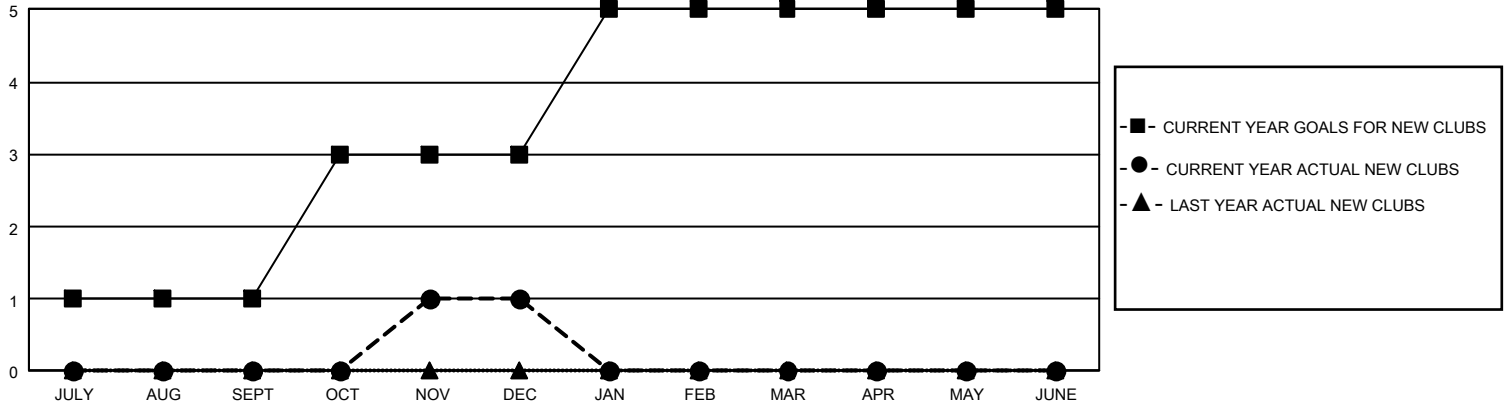
## GMT Constitutional Area 2, Group C

REPORT DOES NOT INCLUDE CLUBS IN UNDISTRICTED AREAS.

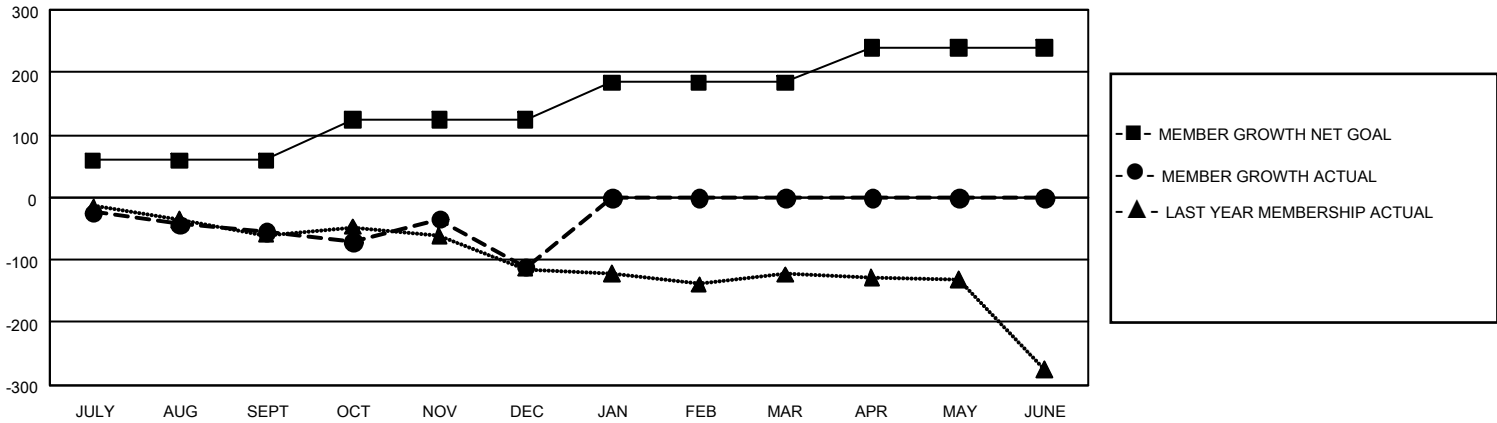
Clubs			
RESULTS FOR 2022-2023			
QUARTER	NEW CLUB GOAL	NEW CLUBS	DROPPED CLUBS
JULY/AUG/SEPT	3	0	0
OCT/NOV/DEC	6	1	3
JAN/FEB/MAR	6	0	0
APR/MAY/JUNE	0	0	0

Members			
RESULTS FOR 2022-2023			
QUARTER	MEMBER GROWTH NET GOAL	MEMBER GROWTH ACTUAL	DROPPED MEMBERS ACTUAL (including transfers)
JULY/AUG/SEPT	59	28	77
OCT/NOV/DEC	65	104	155
JAN/FEB/MAR	60	0	0
APR/MAY/JUNE	55	0	0

GOALS AND ACTUAL NEW CLUBS CUMULATIVE



GOALS AND ACTUAL MEMBERS CUMULATIVE



<b>DROPPED CLUBS: 3</b>	
<b>DROPPED MEMBERS</b>	
DECEASED	21
CLUB CANCELLED	35
OTHER	176
<b>TOTAL</b>	<b>232</b>

51 CLUBS OF 160 ADDED 1 OR MORE NEW MEMBERS

[CLICK HERE FOR CUMULATIVE MEMBERSHIP DATA](#)

<u>GENDER DISTRIBUTION</u>	
MALE	2,171 (65.47%)
FEMALE	1,145 (34.53%)
NON BINARY	0 (0.00%)
PREFER NOT TO ANSWER	0 (0.00%)
TOTAL FAMILY UNIT MEMBERS	629
FAMILY MEMBERS PAYING HALF DUES	321